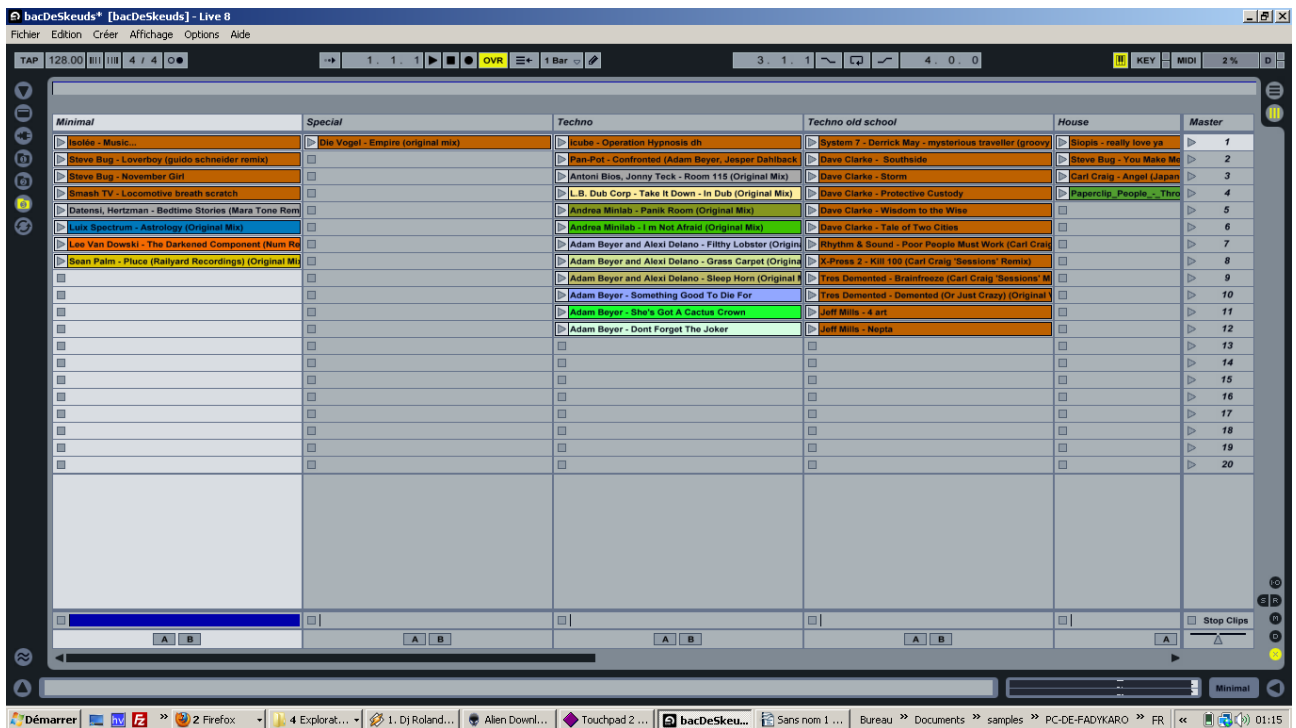
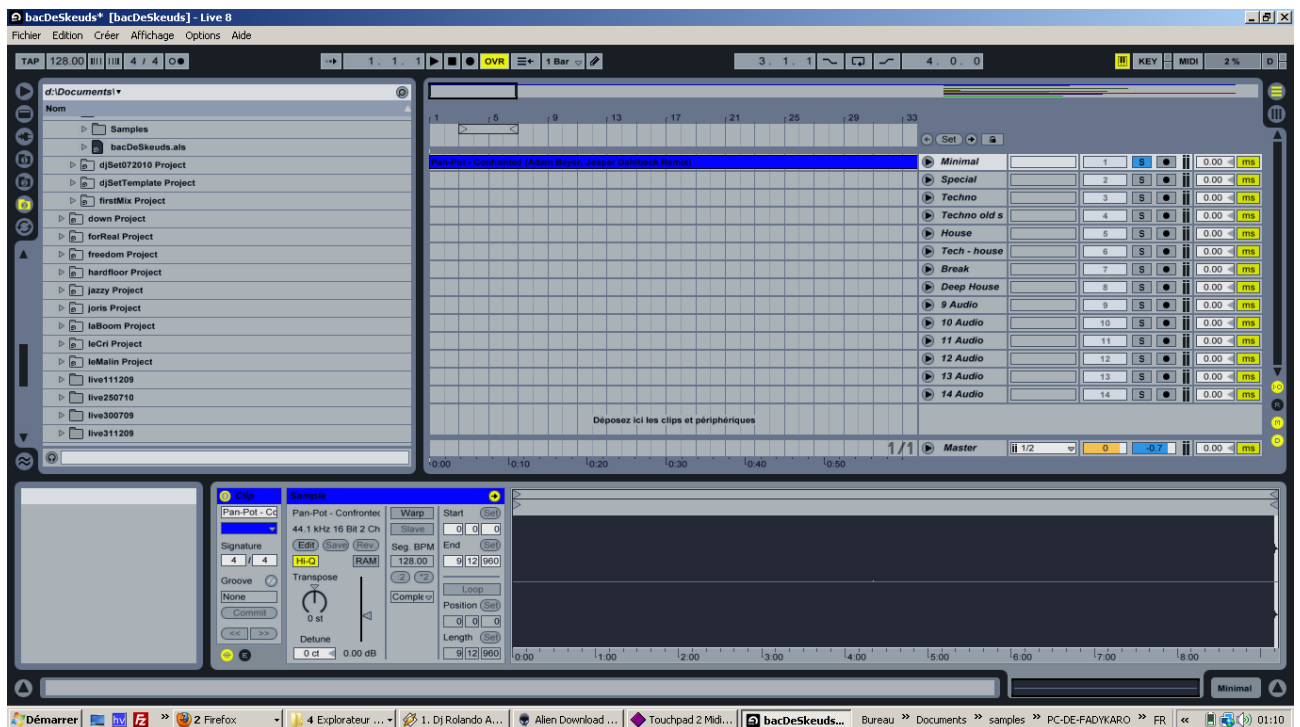


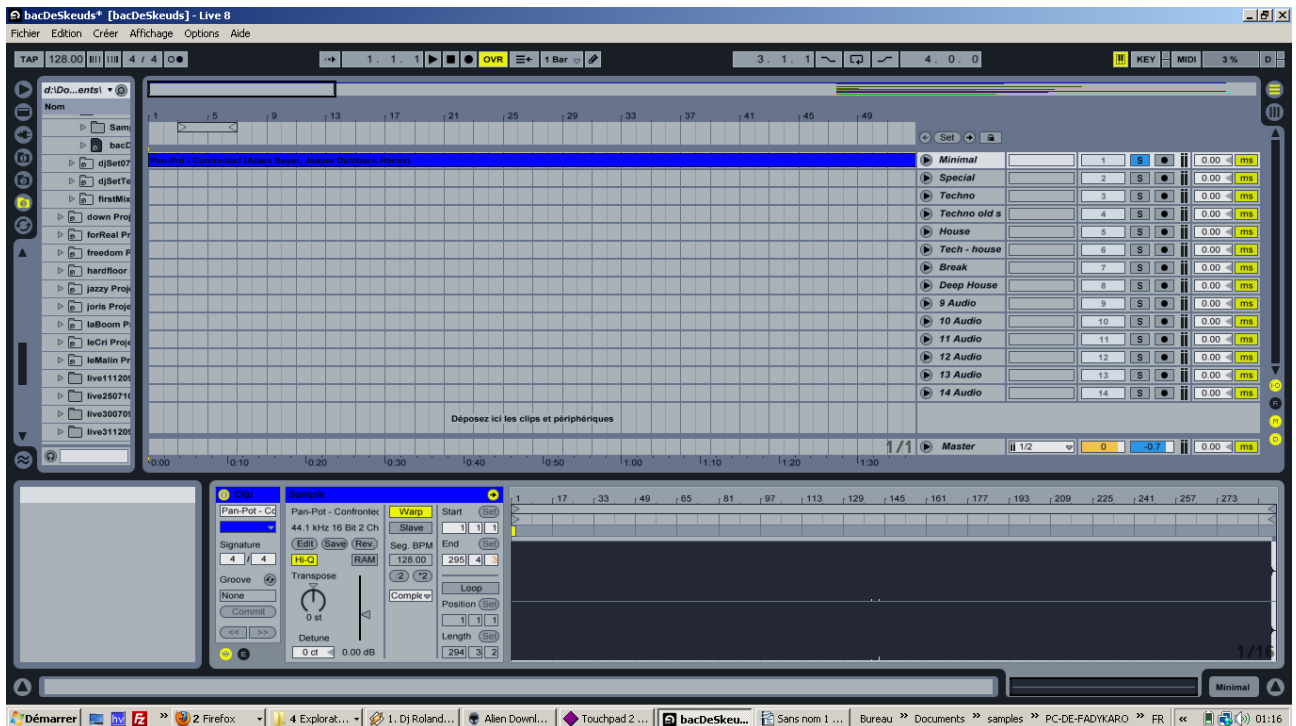
1. I usually have a set containing all my warped track : I use arrangement view to warp and session view as my vinyl collection



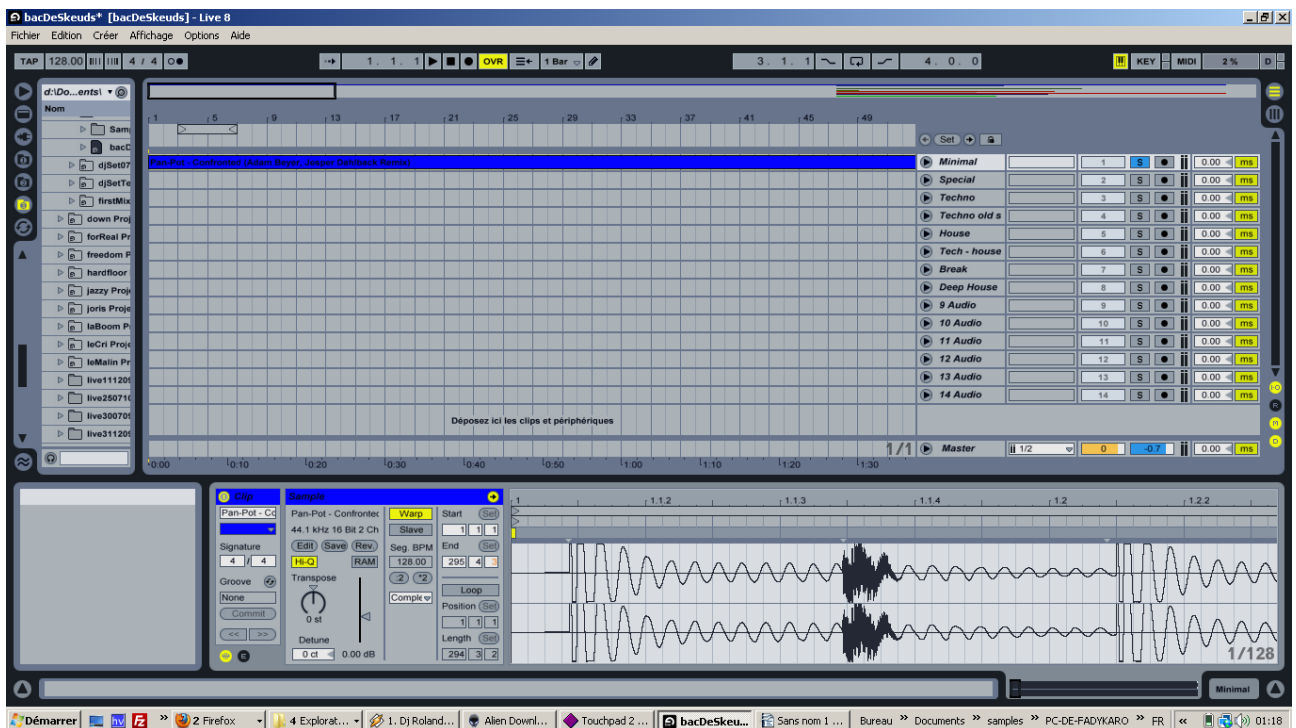
2. In this set I import a new track into live arrangement view (drag n drop p.e.)



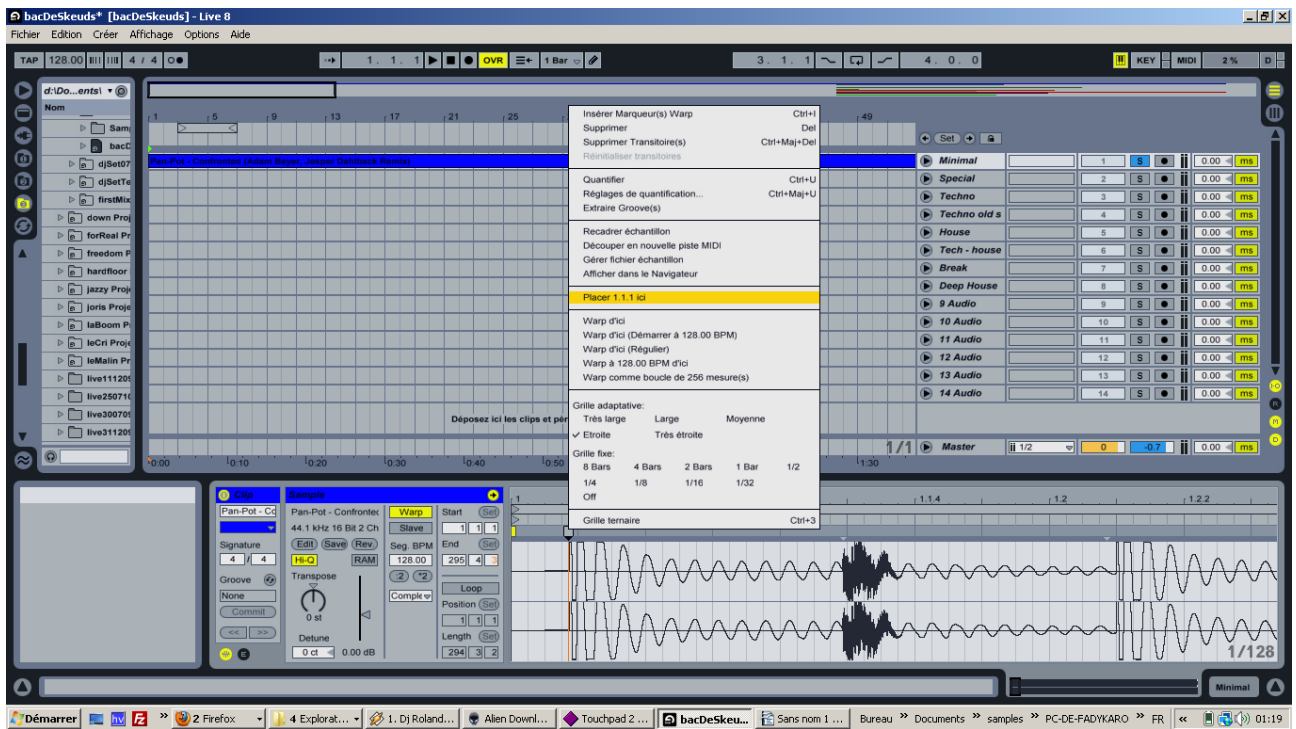
3. hit the warp button



4. zoom on the 1 position

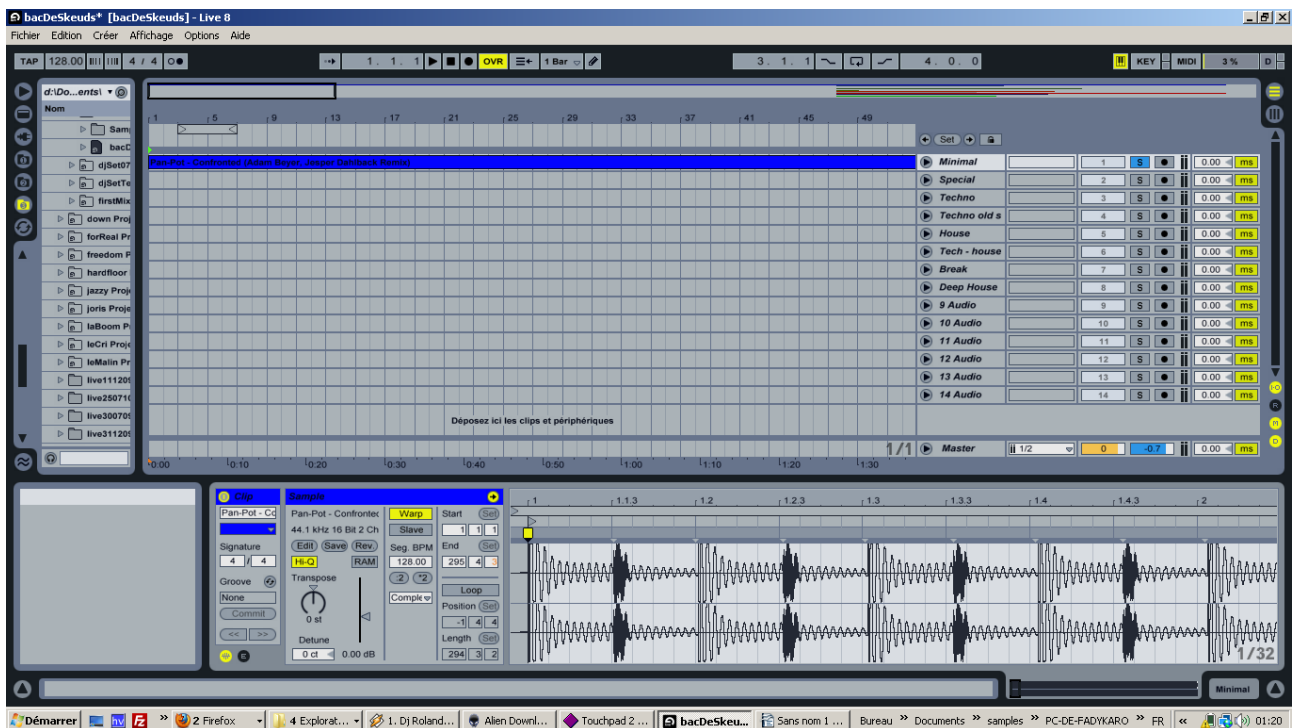


5. place 1.1.1 at the first beat



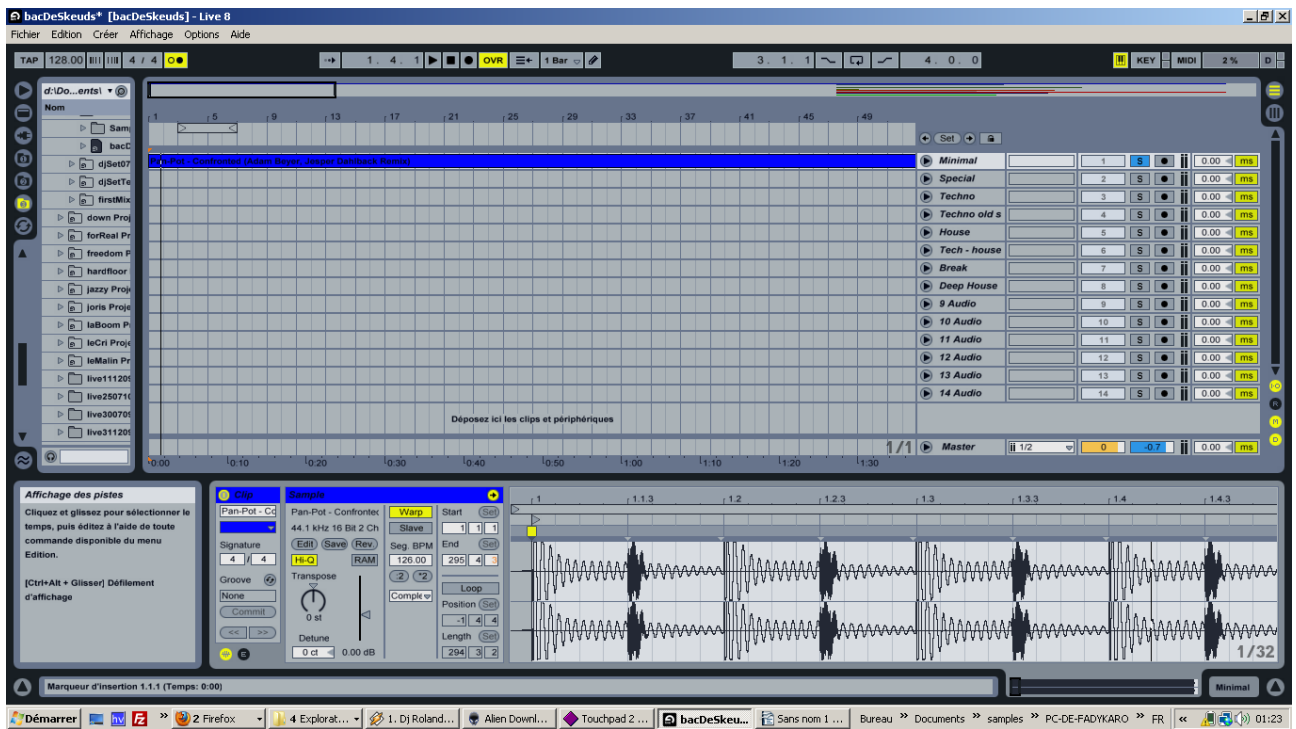
(sorry my version speaks french ;-)

6. zoom out until you can see from 1.1.1 to 2.1.1



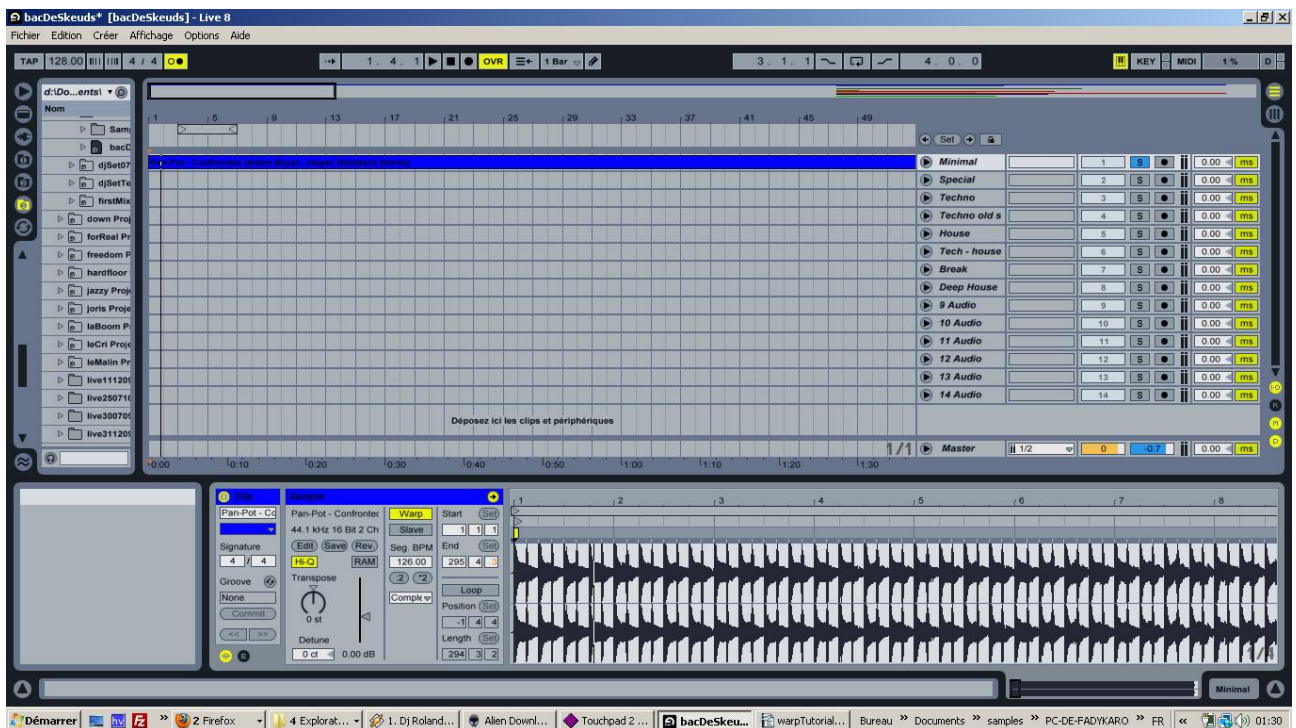
here you have 4 bars of the song.

7. Play with the Seg. BPM until all the kiks fall on the grid.



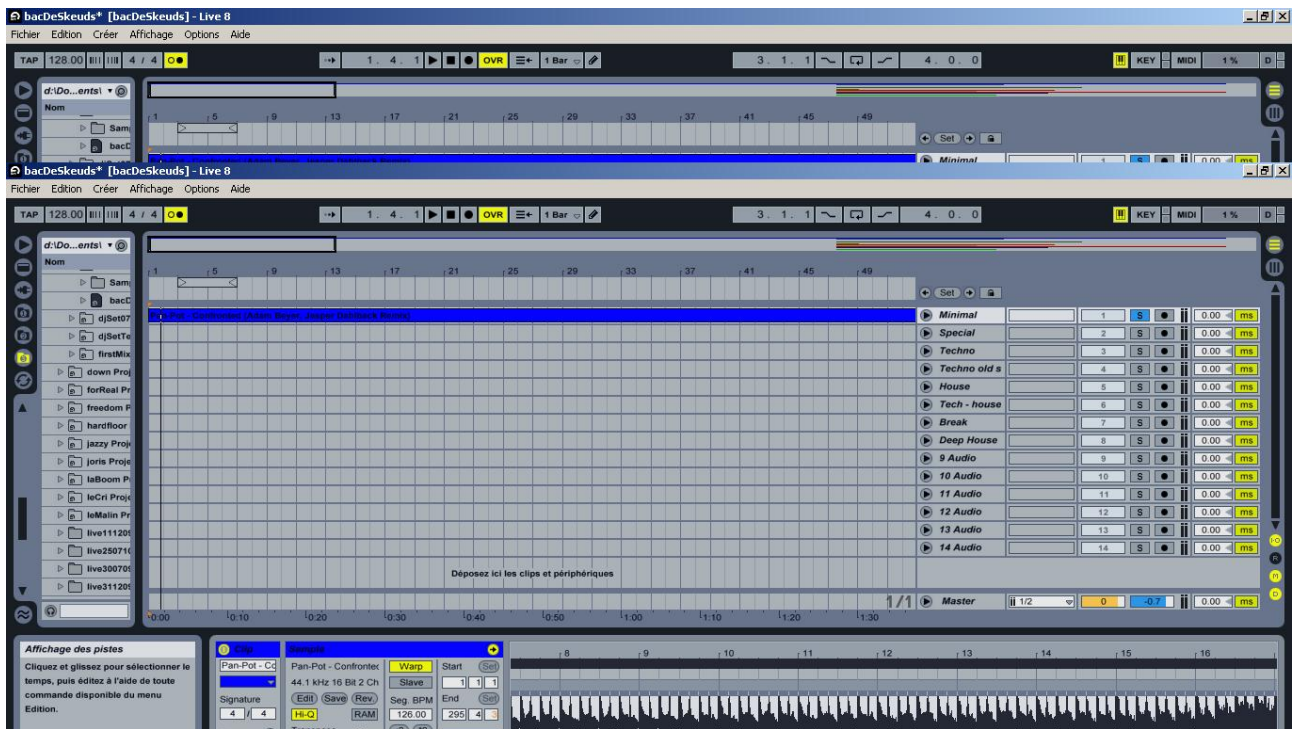
Usually it is an integer value, hear it with the metronome to check whether it is correct or no.

8. zoom out

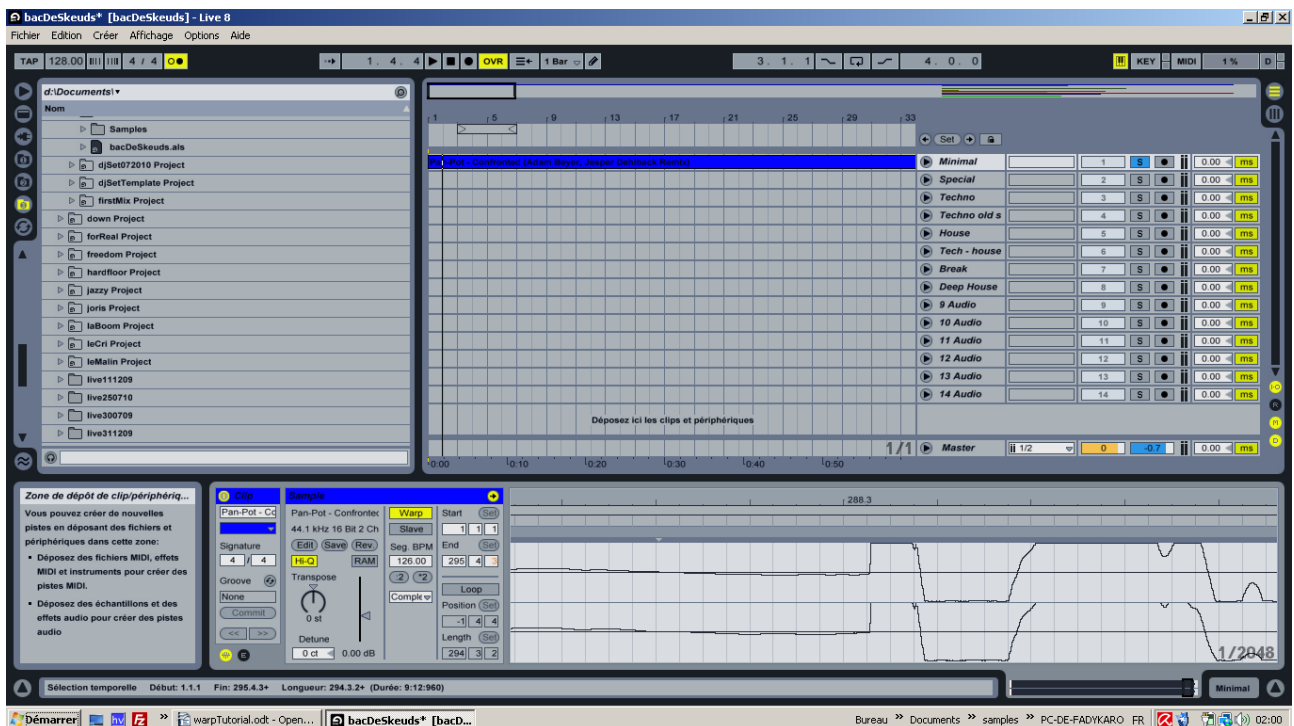


is it still OK? Here it looks fine.

9. Scroll until 16, if it stays OK then you're almost done, if not that means the bpm value you entered was not correct

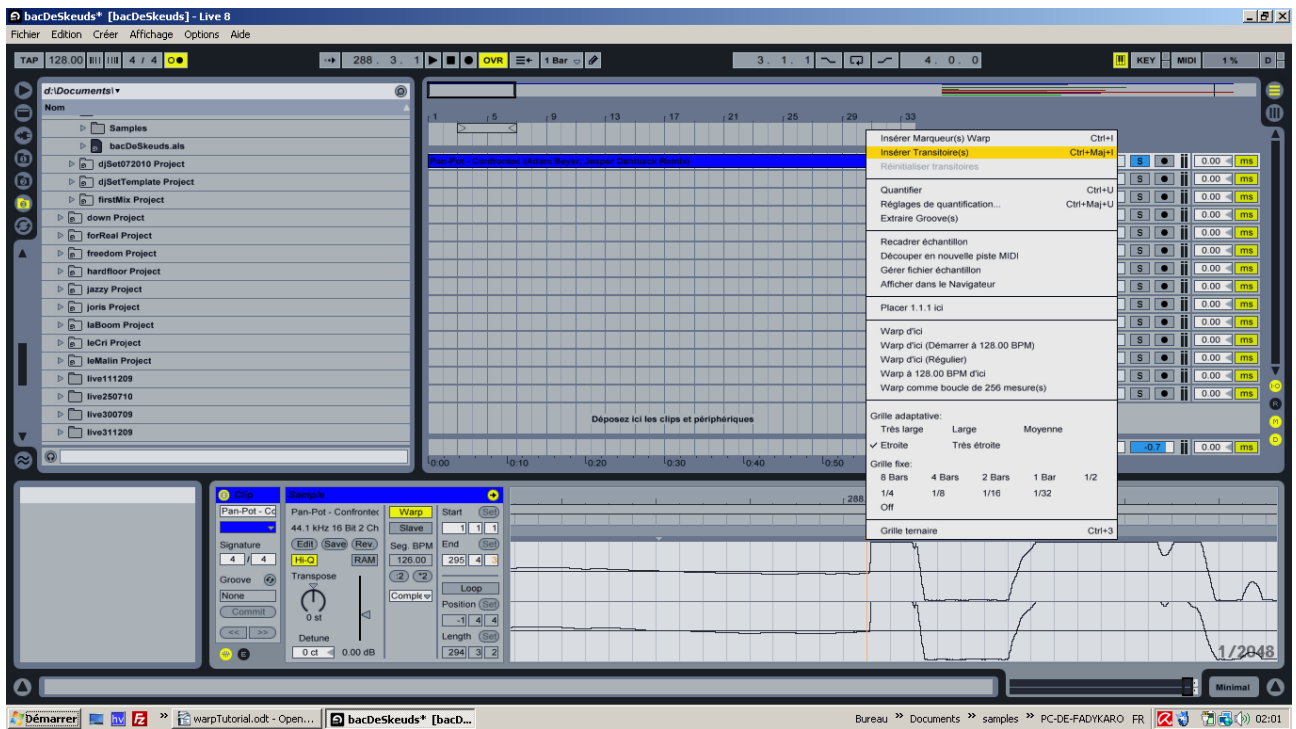


10. When it is OK until 16 go to the last part of the song where you still have some drums, zoom in and rectify the position of the grey marker for the beat to fall on the grid

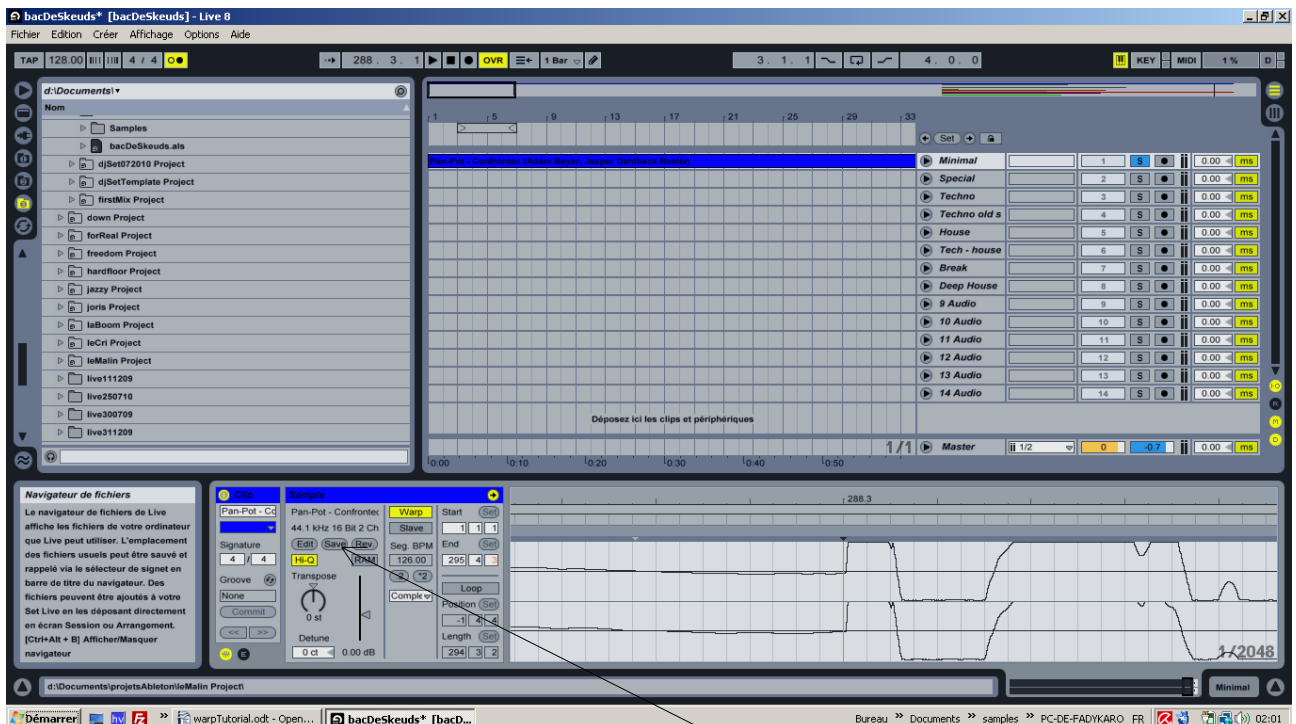


here you can see it is very slightly off beat.

So I correct this by inserting a grey marker :

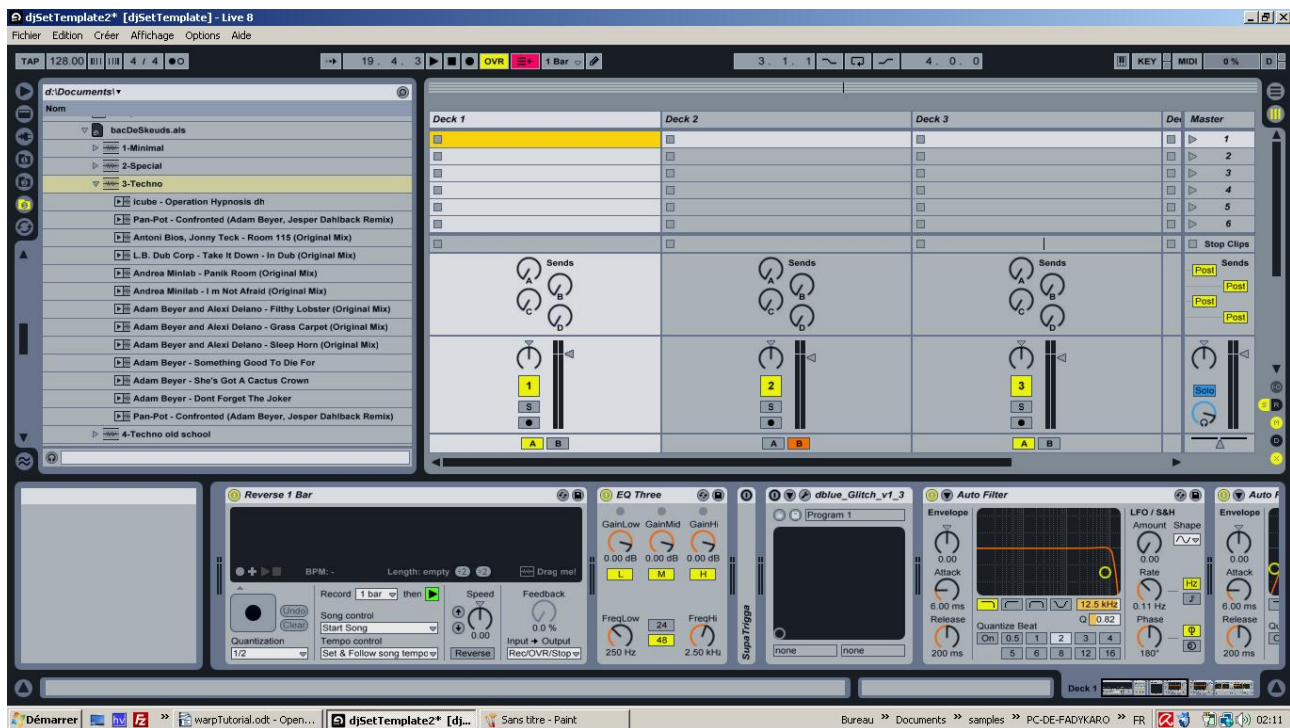


and by dragging it on the grid



here it is better.

11. I finally save the warp settings in the asd file by hitting save
12. I cut the clip from arrangement view and paste it in the appropriate column of the session view
13. when I am djing I use a set containing my decks settings :



I have an open browser showing the set I gather my tracks in. I then just drag and drop the clips in session view

14. Sometimes you think you got it but you are wrong, you should always try mixing the track with another one before you think it is perfect.